



TAKEUCHI


TB257FR



Huppenkothen added-value equipment

There is additional equipment that everyone wants.
You therefore get more as standard from Huppenkothen. This makes your excavator more powerful, faster and more comfortable.

Put simply - added value.

 HYDRAULIK
4 hydraulic auxiliary circuits , 3 of which have proportional control
Flow rates adjustable on the display 1 st circuit: 3 memories and High Flow function 2 nd /4 th circuit: 1 memory
1st hydraulic auxiliary circuit, with proportional control - max. 105 l / min
2nd hydraulic auxiliary circuit, with proportional control - max. 44,7 l / min
3rd hydraulic auxiliary circuit , for hydraulic quick change plate HUPPPlate H
4th hydraulic auxiliary circuit, with proportional control - max. 44,7 l / min
Detend Mode - breaker line continuous operation
Auto-Tank - depressurised return flow for breaker operation
Automatic pressure relief of control circuits when quick change plate is actuated
Strong variable double - axial piston pump
Hydraulic tank venting
Pilot-opened load-holding valve on boom cylinder and arm cylinder



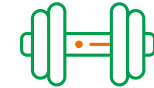
Exclusive additional kit



Powerful



Spacious and comfortable operator cabin



Adjustable powerhouse

CAB WITH COMFORT EQUIPMENT

Comfort cab ROPS / FOPS (Level II)
"Climatronic" temperature-controlled air-conditioning system with quadruple air outlet system
Heating and radio
Mechanically cushioned comfort seat with neck support
HFM (HUPPIFleetManagement) - telematics system with 2 year term of use - extended for additional charge
ECO-mode and high-altitude mode for increasing efficiency, optimal engine control at altitude
Automatic idle - r.p.m. deceleration

TECHNICAL AND SAFETY EQUIPMENT

Double air filter - additional protection for the engine
Spring-loaded accumulator on parking brake
Spring-loaded accumulator on slew brake
Electric refuelling pump
Pressure accumulators for pressure relief of hydraulic circuits and emergency boom lowering
Storage compartment with on-board toolkit
Acoustic overload warning device (EN474-5)
LED worklights 1x arm, 2x on cab at front, 2x on cab at rear
Socket on cab roof for rotary beacon
USB charging socket

Optional additional equipment and services



HUPPLub
Huppenkothen central lubrication system to ensure everything runs even more smoothly

HUPPTronic
Lifting and slewing movement limiter with programmable limit areas for increased safety.

HUPPIWarranty
Extended premium warranty package with all-round protection.

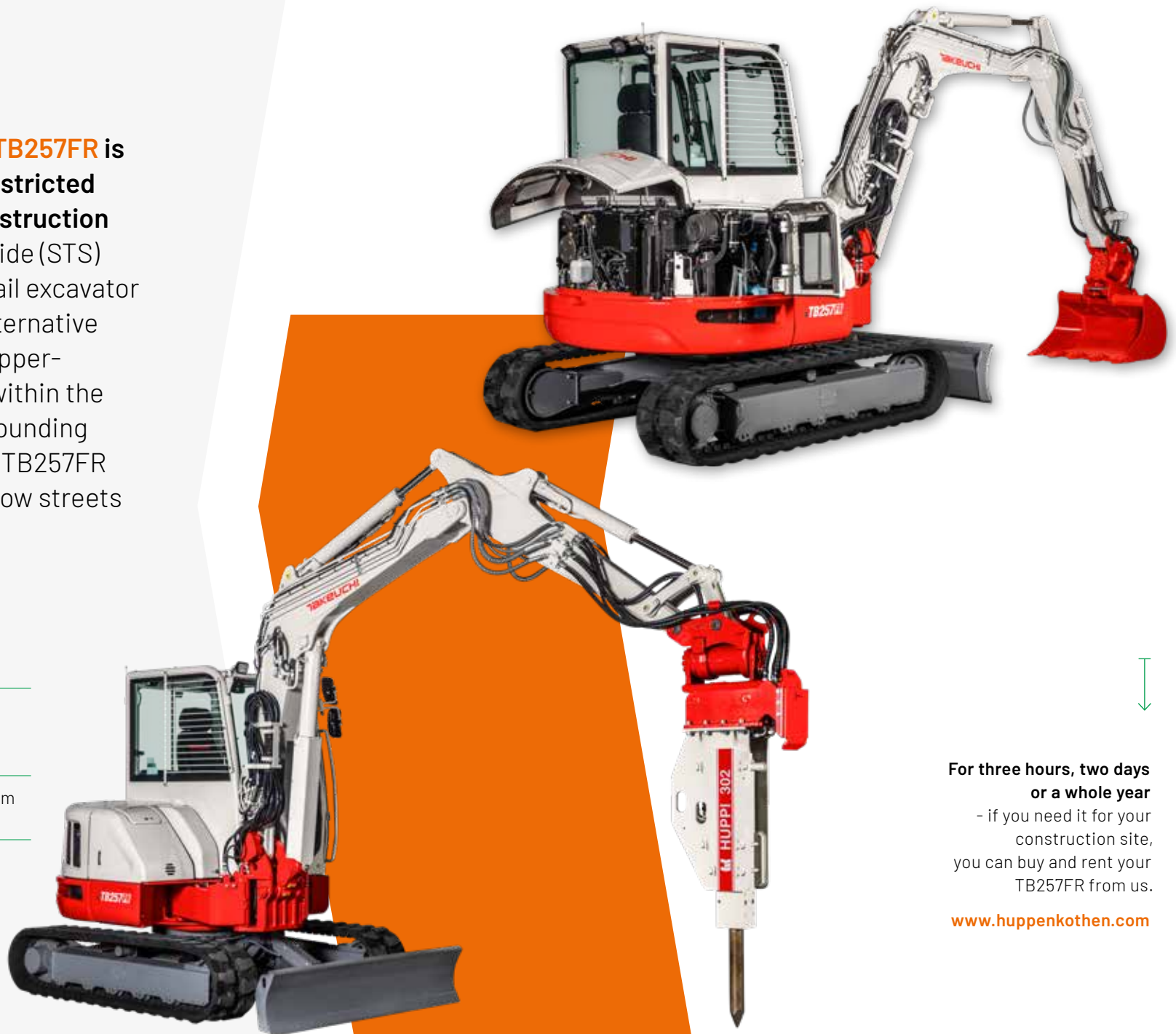
HUPPIFleetManagement
An eye on every machine at all times with fleet management. First 2 years included in purchase price.



The Takeuchi mini excavator **TB257FR** is specifically designed for unrestricted working on very confined construction sites. The patented side-to-side (STS) offset boom makes this zero tail excavator more compact and the best alternative to a short tail excavator. The upper-structure rotates 360° nearly within the width of the track. With a surrounding diameter of just 2870 mm, the TB257FR is also ideal for working in narrow streets where space is confined.



- › 1st hydraulic circuit, with proportional control with 105 l/min High Flow
- › Air conditioning, heater and Bluetooth radio for optimal driver comfort
- › 5 LED worklights for optimum illumination of working area



For three hours, two days
or a whole year
- if you need it for your
construction site,
you can buy and rent your
TB257FR from us.

www.huppenkothen.com

SPECIFICATIONS

Engine	KUBOTA V2403-CR-TE5B Commonrail diesel engine, turbo charger, 39.0 kW @ 2,200 rpm (ISO14369) Stage V emission level - with DPF and DOC
Dimensions (mm)	5.395 x 2.000 x 2.575
Digging depth (mm)	3.895
Reach (mm)	6.215
360° swing radius (mm)	1.435

MAIN DIMENSIONS

Service weight* (kg)	6.160
Total width (mm)	2.000
Overall height (mm)	2.575
Transport length (mm)	5.905
Boom swing angle l / r (°)	30 / 16

*Machine weight + SWPL + PL + medium size bucket + half a tank of diesel

CHASSIS

Tracks	rubber, steel
Track width (mm)	400
Ground contact (mm)	1.980
Ground pressure (kg / cm ²)	0,333
Ground clearance (mm)	300
Dozer blade dimensions (mm)	2.000 x 430

WORK PERFORMANCE

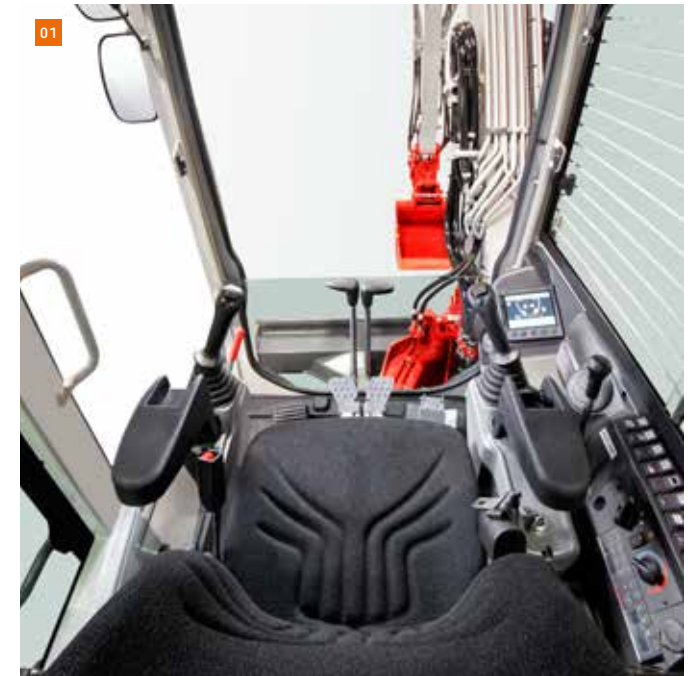
Travel speed (km / h)	4,8
Slew speed (rpm)	9,6
Gradeability (degrees / %)	30 / 58
Digging force bucket (kN)	36,6
Digging force arm (kN)	23,1

HYDRAULIC SYSTEM

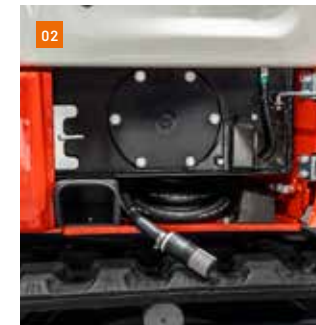
Hydraulic pumps	Double axial piston pump + 2 gear pumps
Pump pressure (bar)	240 x 240 x 206 x 34
Flow rate (l / min)	60,5 x 60,5 x 44,7 x 9,9
Hydraulic tank (l)	52 (Tank) / 100 (total)
Slew motor type	Axial piston motor, rigid
Travel motor type	Axial piston motor, variable

AUXILIARY CONTROL CIRCUITS

1 st control circuit hydraulic breaker 3 x adjustable flow rate	105,0
2 nd / 4 th control circuit Powertilt / grab (l / min) adjustable flow rate	44,7



01 Ergonomic, mechanically cushioned comfort seat and optimal arrangement of controls for fatigue-free working



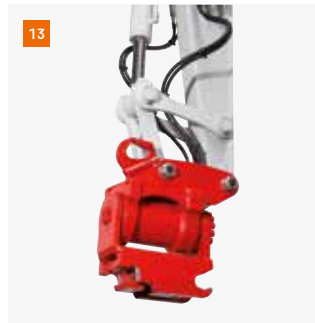
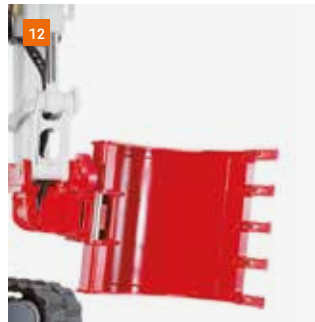
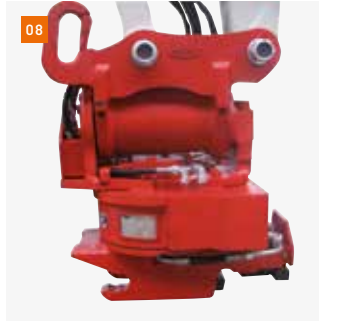
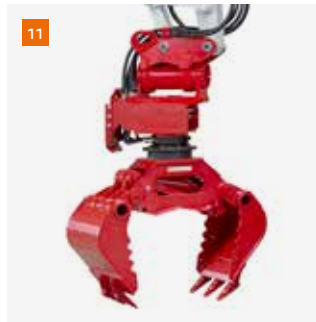
02 Separate compartment for fuelling hose in the upperstructure



03 Additional hinged flap for optimum access to refuelling pump and fuel filler flap



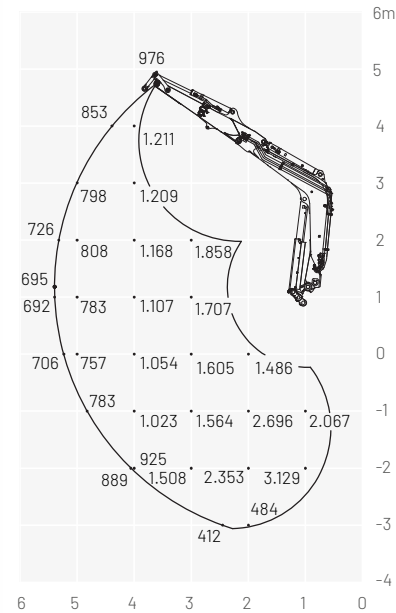
04 Takeuchi-patented, extremely robust lateral boom offset



- 07 Hydraulic HUPPPlate H quick-coupler
- 08 HUPPTilt R tilt-rotator with HUPPPlate H
- 09 HUPPTwist rotator bucket 360°
- 10 HUPPBreak hydraulic breaker with HUPPQuick
- 11 HUPPGrip universal grabber with HUPPTilt and HUPPQuick quick coupling system
- 12 HUPPTilt with HUPPPlate H, digging bucket mounted as high bucket
- 13 HUPPTilt tilt device with HUPPPlate H
- 14 HUPPQuick system: Hydraulic connections are connected automatically during the quick coupling process

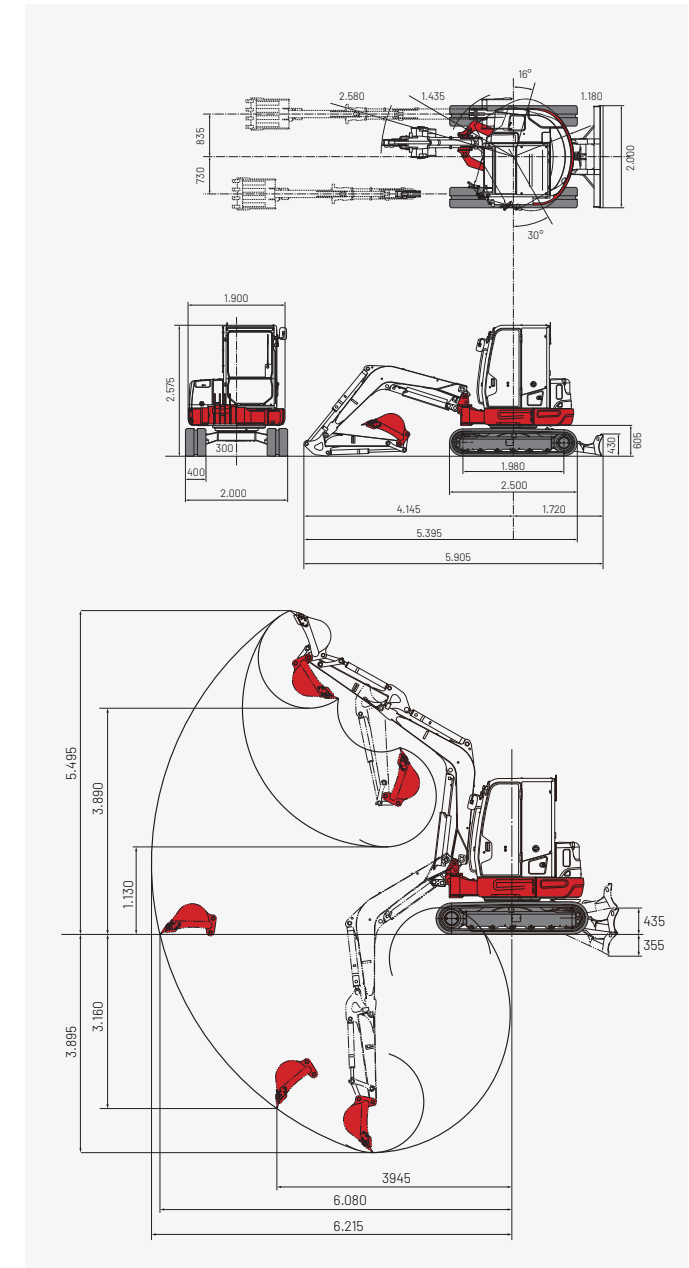
Lifting load (kg)

Forward (upper dozer blade)



The loads in the diagram are within 87 % of the hydraulic lifting load and within 75 % of the tipping load.

Dimensions (mm)



More accessories at
huppenkothen.com

Huppenkothen – your construction site, your partner, your success!

If you're looking to buy or rent a construction machine, if quality is important to you and you have no time to lose, then you've come to the right place with Huppenkothen. We provide all you need for your construction site. If you have any questions

We are always available.

41

Locations

350

Employees

4.500+

Machines

100 %

Service

AUSTRIA (AT)

/

Huppenkothen GmbH

Bundesstraße 117 / 6923 Lauterach

T +43 50 633 400 / +43 5574 778 24

info@huppenkothen.com

The complete
Huppenkothen
product range:

